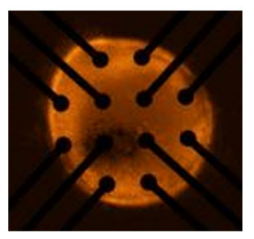
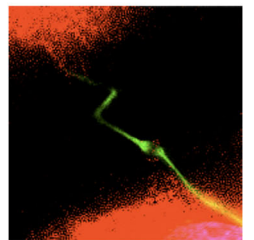
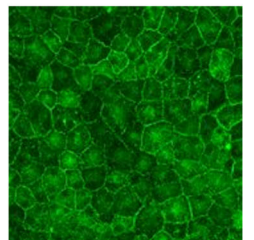
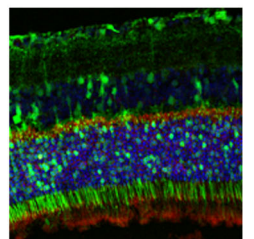
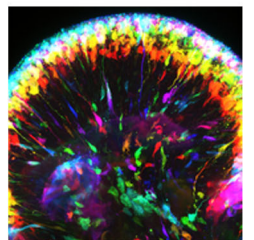
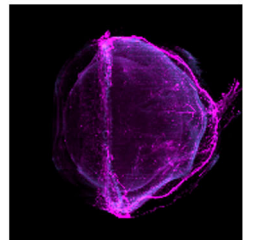
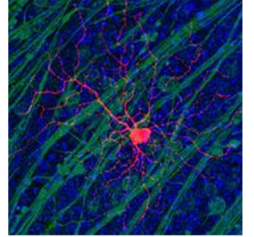
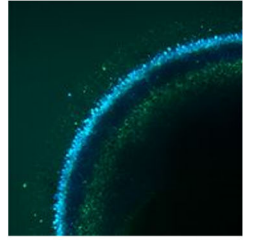




**McPherson
Eye Research Institute Seminar Series**
UNIVERSITY OF WISCONSIN-MADISON

MONROE & SANDRA TROUT
Director's Fund for Vision Research
SUPPORTED BY A
TROUT FAMILY ENDOWMENT

**Fall Semester 2021
12:00 to 1:00 PM
Tuesdays**



TUESDAY, SEPTEMBER 14, 2021

Ralph W. Nelson (2020 Kenzi Valentyn Vision Research Grant Recipient; Mason Lab, Kinesiology, UW-Madison)

The effects of dual-task interference and visual attention in autistic and non-autistic youth

Yin Li PhD, Asst. Prof. (Biostatistics and Medical Informatics, UW-Madison)

Understanding daily visual experience from a first-person perspective

TUESDAY, OCTOBER 12, 2021

Anjani Chakrala (2020 Kenzi Valentyn Vision Research Grant Recipient; Huang Lab, Neuroscience, UW-Madison)

Neural representation of multiple moving stimuli at different depths

Jacqueline Fulvio, PhD (Postle Lab, Psychology, UW-Madison)

Sensitivity to 3D motion cues in virtual reality and implications for motion sickness

TUESDAY, NOVEMBER 9, 2021

Abhilash Sawant (2020 Kenzi Valentyn Vision Research Grant Recipient; Sinha Lab, Neuroscience, UW-Madison)

Understanding the mechanism and function of postsynaptic inhibition in the ON-alpha retinal ganglion cell

Julie Wallin (Hoon Lab, Ophthalmology & Visual Sciences, UW-Madison)

Remodeling of inhibitory synapses at retinal bipolar cell terminals after loss of afferent input

TUESDAY, DECEMBER 14, 2021

Filiz Yesilkov, PhD, Asst. Professor (Biomedical Engineering, UW-Madison)

Optical metasurfaces for advanced biosensing and spectral imaging

Robert Scheidt, PhD, Professor, (Biomedical Engineering, Marquette University)

Visual contributions to sensorimotor maps of peripersonal space